

VILLAS

All drawings are approximate. Gross square footage is the exterior footprint of the building.



Villa - Type 1

1,991 Gross Sq. Ft.
Living Space: 1,423 Sq. Ft.
Porch & Garage: 568 Sq. Ft.

Villa - Type 1A

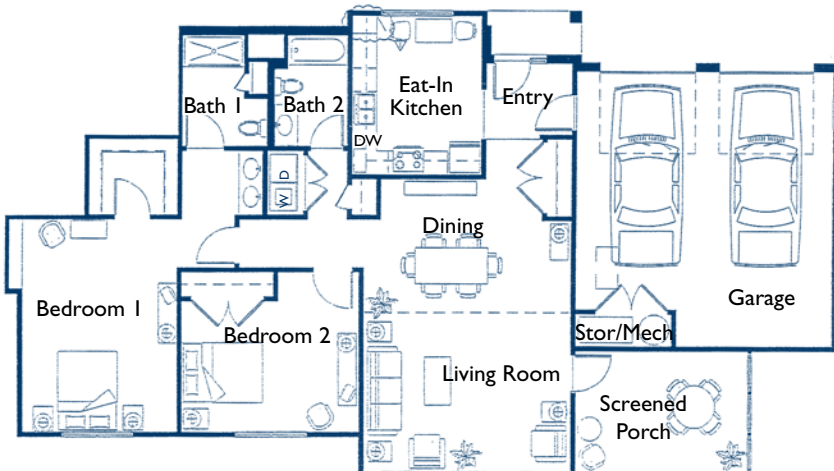
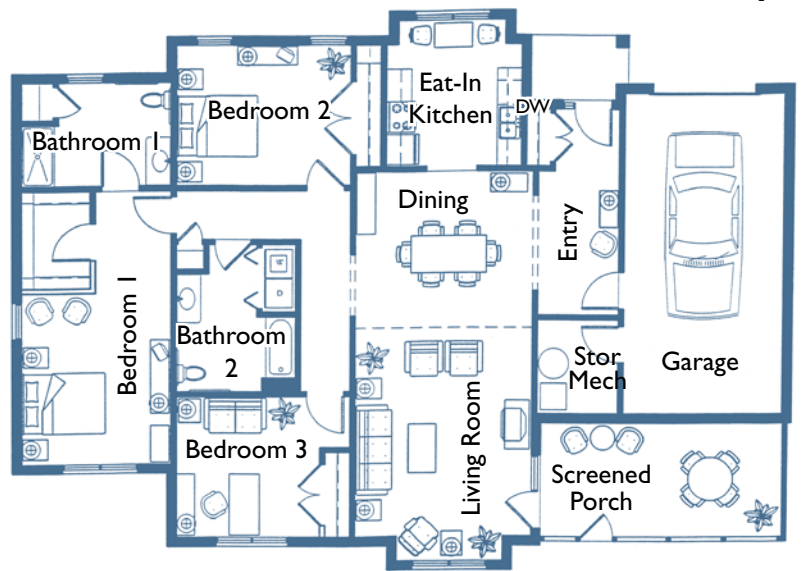
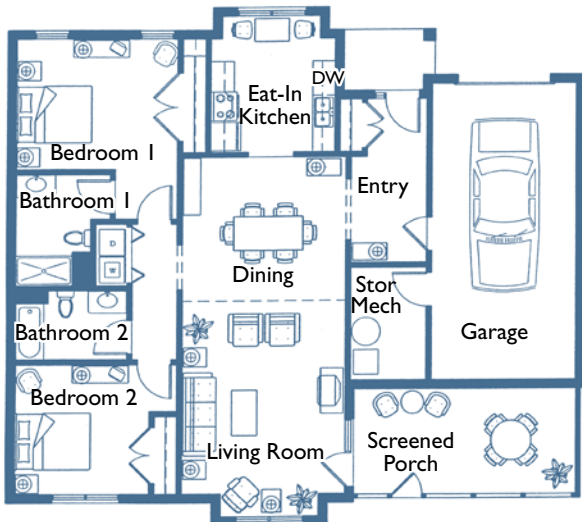
3,090 Gross Sq. Ft.
Living Space: 1,423 Sq. Ft.
Porch & Garage: 568 Sq. Ft.
Basement: 1,099 Sq. Ft.

Villa - Type 2

2,261 Gross Sq. Ft.
Living Space: 1,693 Sq. Ft.
Porch & Garage: 568 Sq. Ft.

Villa - Type 2A

3,360 Gross Sq. Ft.
Living Space: 1,693 Sq. Ft.
Porch & Garage: 568 Sq. Ft.
Basement: 1,099 Sq. Ft.



Villa - Type 3

2,115 Gross Sq. Ft.
Living Space: 1,448 Sq. Ft.
Porch & Garage: 667 Sq. Ft.

Villa - Type 3A

3,214 Gross Sq. Ft.
Living Space: 1,448 Sq. Ft.
Porch & Garage: 667 Sq. Ft.
Basement: 1,099 Sq. Ft.

APARTMENTS

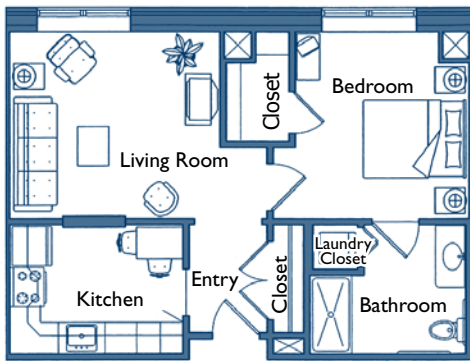
Each living accommodation includes wall-to-wall carpeting, sheer curtains, electric range, refrigerator, microwave, dishwasher, washer, dryer, emergency call system, smoke detector and individually-controlled heating and air conditioning.



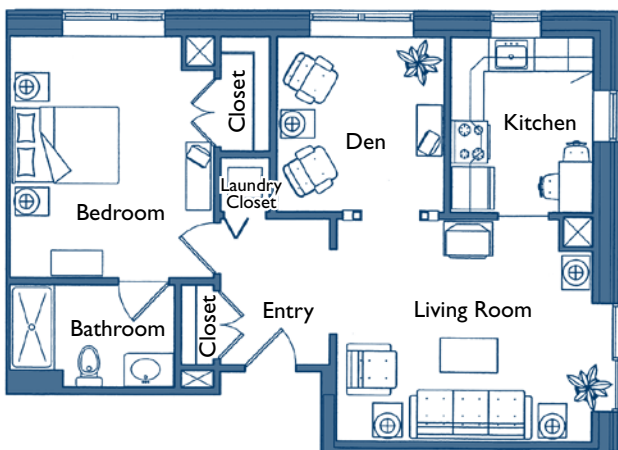
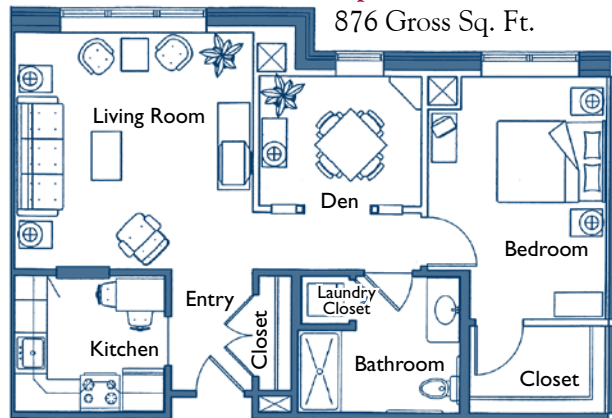
All drawings are approximate. Gross square footage is the exterior footprint of the building.



Apartment Unit A1
670 Gross Sq. Ft.

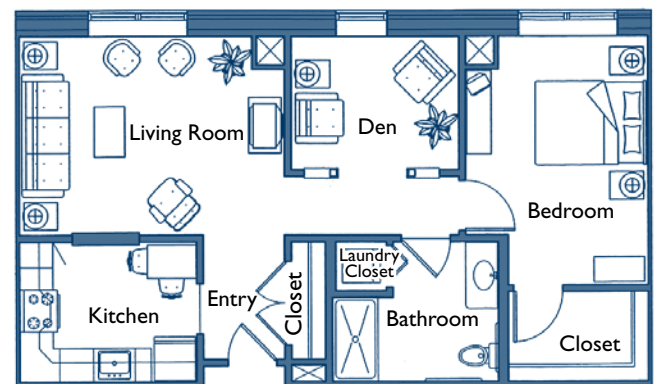


Apartment Unit B1
876 Gross Sq. Ft.



Apartment Unit B2
936 Gross Sq. Ft.
Living Space: 871 Sq. Ft.
Balcony: 65 Sq. Ft.

Apartment Unit B3
858 Gross Sq. Ft.



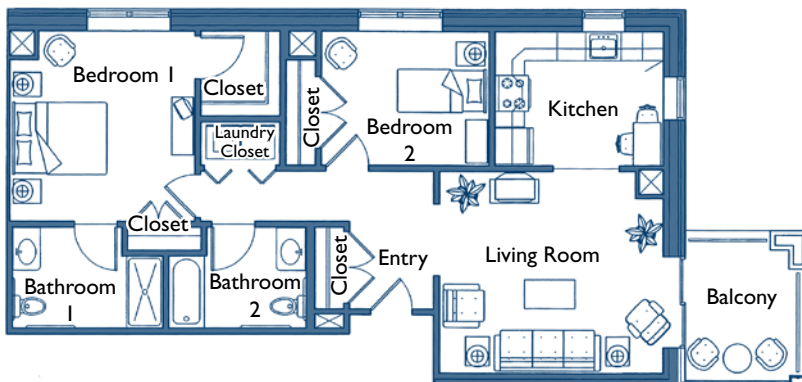
APARTMENTS



Apartment Unit C1

1,173 Gross Sq. Ft.

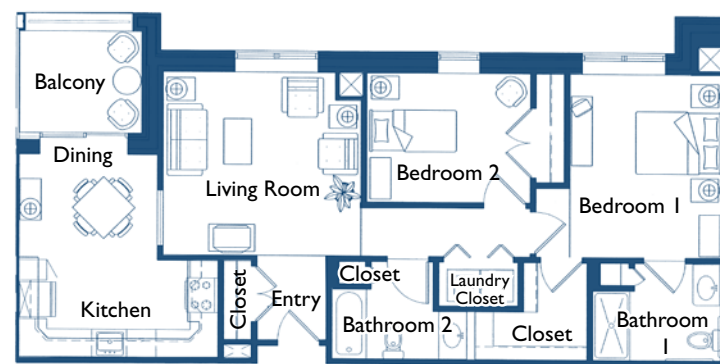
Living Space: 1,120 Sq. Ft. • Balcony: 53 Sq. Ft.



Apartment Unit C3

1,156 Gross Sq. Ft.

Living Space: 1,100 Sq. Ft. • Balcony: 56 Sq. Ft.

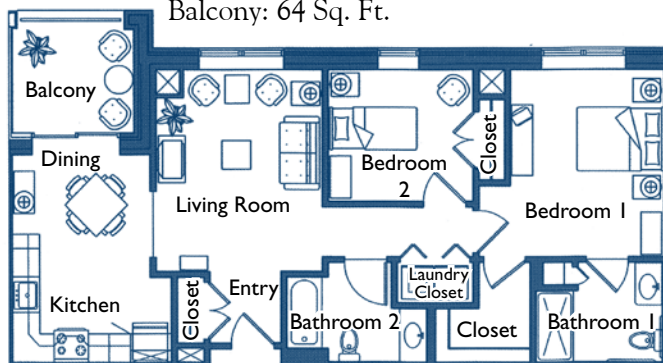


Apartment Unit C2

1,064 Gross Sq. Ft.

Living Space: 1,000 Sq. Ft.

Balcony: 64 Sq. Ft.



Apartment Unit D1

1,293 Gross Sq. Ft.

Living Space: 1,192 Sq. Ft.

Balcony: 101 Sq. Ft.

