

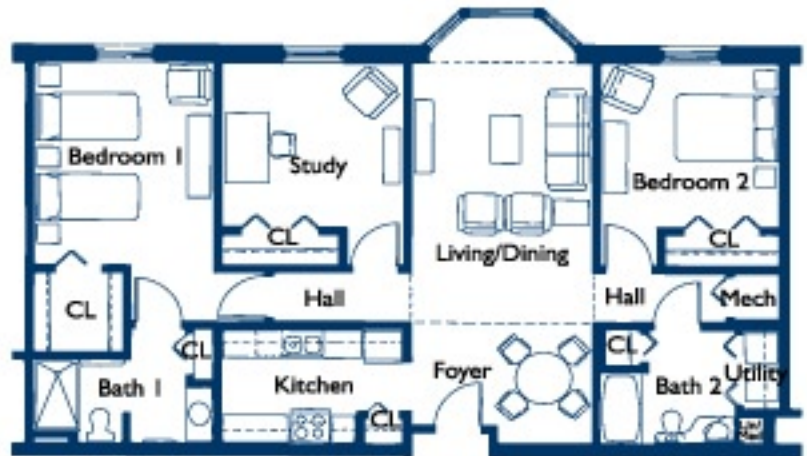
# Retirement Living ENTRANCE FEE PLAN

## BUCHANAN APARTMENTS

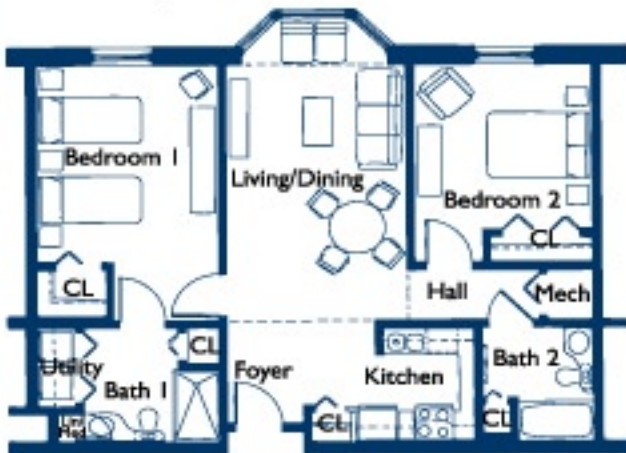
All drawings are approximate. Scale drawings available upon request.



Apartment Unit A -  
Buchanan Apartments  
688 Gross Sq. Ft.



Apartment Unit C - Buchanan Apartments  
1,360 Gross Sq. Ft.



Apartment Unit B - Buchanan Apartments  
1,025 Gross Sq. Ft.



Apartment Unit BC -  
Buchanan Apartments  
1,120 Gross Sq. Ft.  
(excludes balcony)

## Payment Schedule

For Entrance Fee Apartments and Cottages:

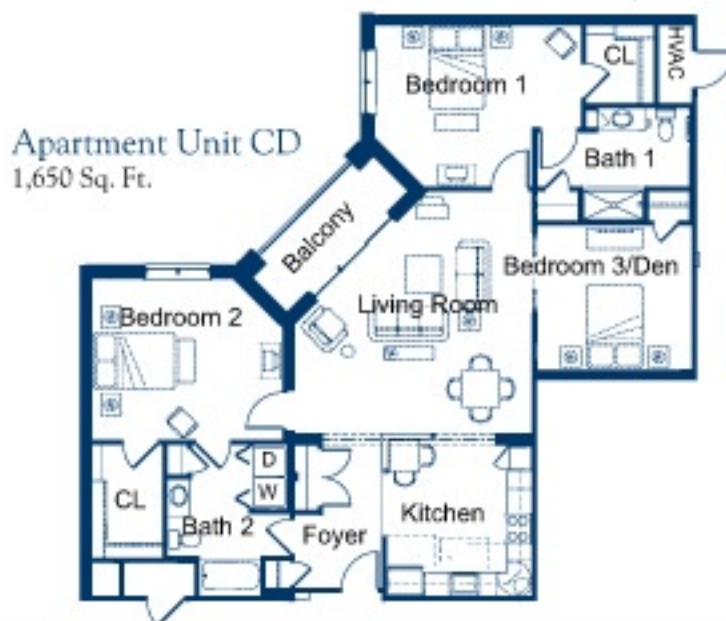
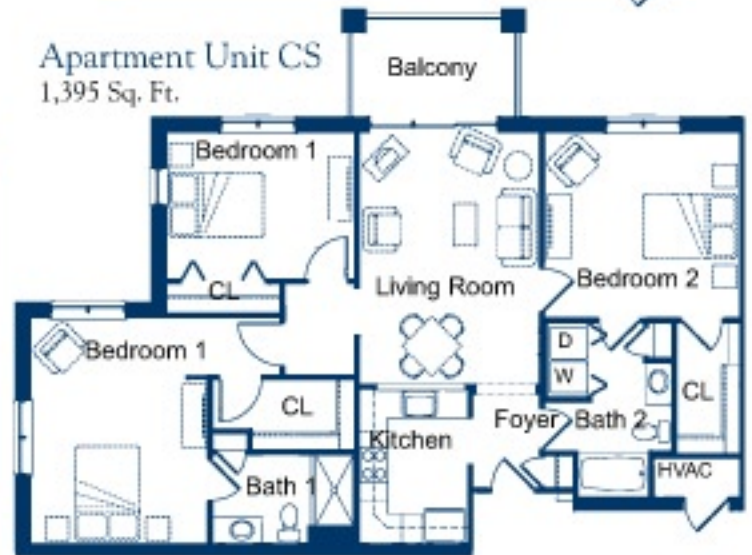
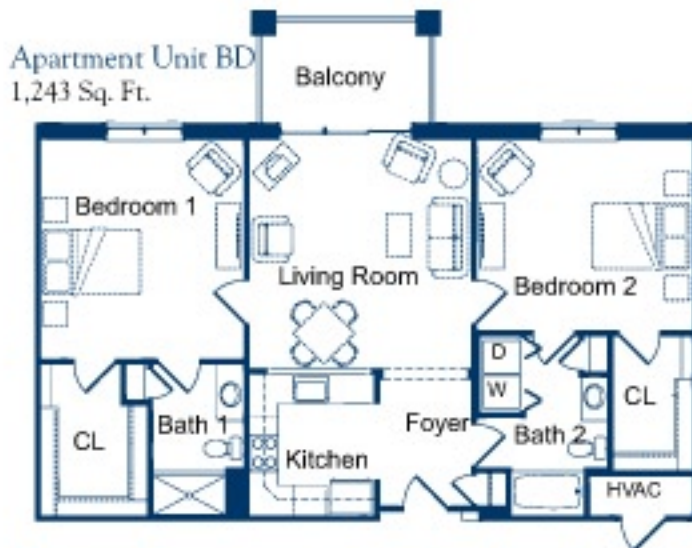
An application deposit of \$2,000, including the \$1,000 priority list deposit, if applicable, is paid to reserve the living accommodation. Upon signing the resident agreement, 10 percent of the entrance fee is payable on units which are currently available. This payment, which includes the \$2,000 application deposit, will be applied to the price of the entrance fee.

Your application deposit is refundable during the remaining application process and within seven days from the date of signing the resident agreement, along with the 10 percent payment. Following the seven-day rescission period, should you decide not to continue with the application process, your 10 percent will be refunded minus the \$2,000 application deposit.

The balance of the entrance fee is due in 90 days, and the monthly service fee begins 60 days after signing the resident agreement or upon occupancy, whichever is sooner.

# Retirement Living **ENTRANCE FEE PLAN**

## SYCAMORE APARTMENTS



# Retirement Living **ENTRANCE FEE PLAN**

## TALL CEDAR LANE COTTAGES



Cottage Unit D - Tall Cedar Lane Cottages  
1,385 Gross Sq. Ft. • Living Space: 1,085 Sq. Ft.  
Garage: 300 Sq. Ft. (excludes porch)



Cottage Unit E - Tall Cedar Lane Cottages  
1,700 Gross Sq. Ft. • Living Space: 1,400 Sq. Ft.  
Garage: 300 Sq. Ft. (excludes porch)

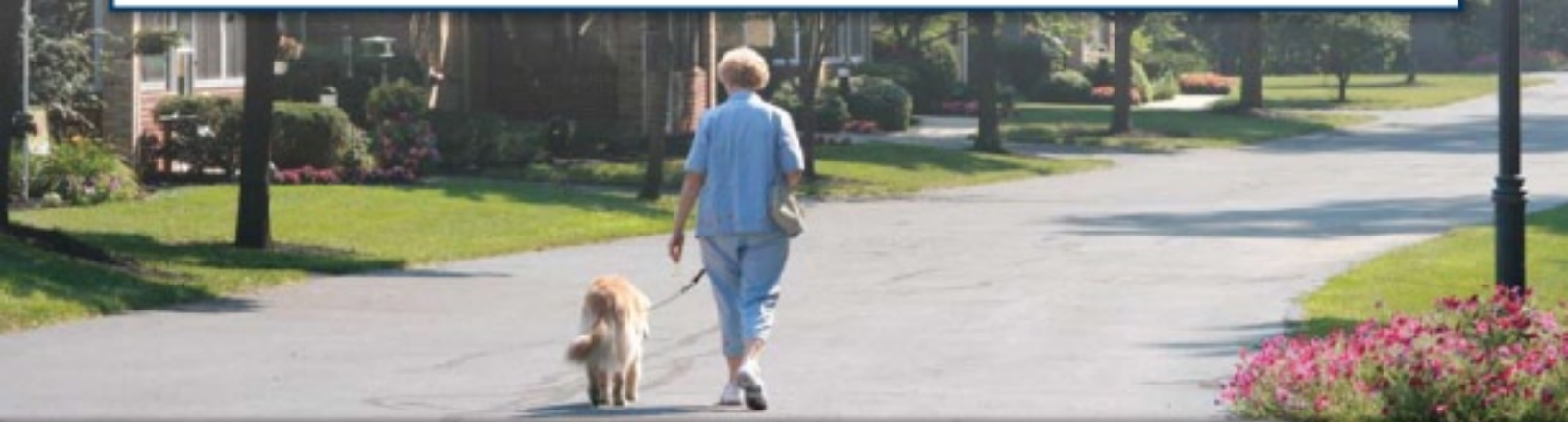
## FRANKLIN, TRUMAN & JACKSON DRIVE COTTAGES



Cottage #1  
1,691 Gross Sq. Ft. • Living Space: 1,180 Sq. Ft.  
Porch & Garage: 511 Sq. Ft.



Cottage #2  
1,958 Gross Sq. Ft. • Living Space: 1,421 Sq. Ft.  
Porch & Garage: 537 Sq. Ft.

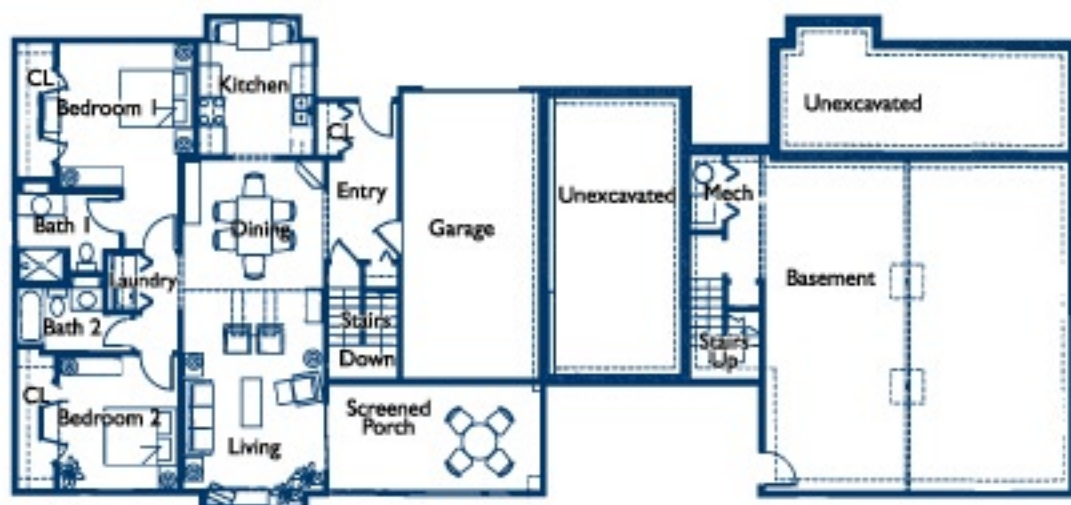


# Retirement Living **ENTRANCE FEE PLAN**

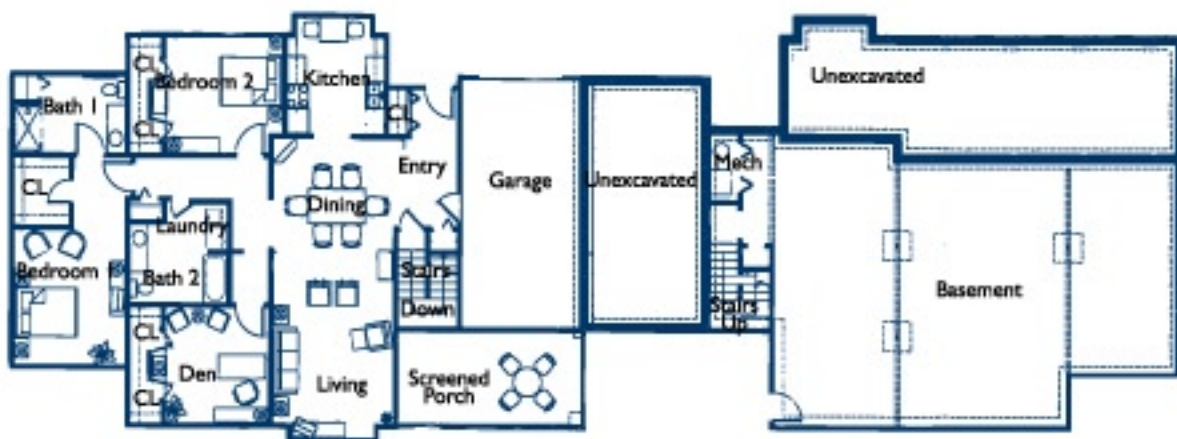
## FRANKLIN, TRUMAN & JACKSON DRIVE COTTAGES



Cottage #3  
2,345 Gross Sq. Ft.  
Living Space: 1,808 Sq. Ft.  
Porch & Garage: 537 Sq. Ft.



Cottage #4  
3,004 Gross Sq. Ft.  
Living Space: 1,421 Sq. Ft.  
Porch & Garage: 537 Sq. Ft.  
Basement: 1,046 Sq. Ft.



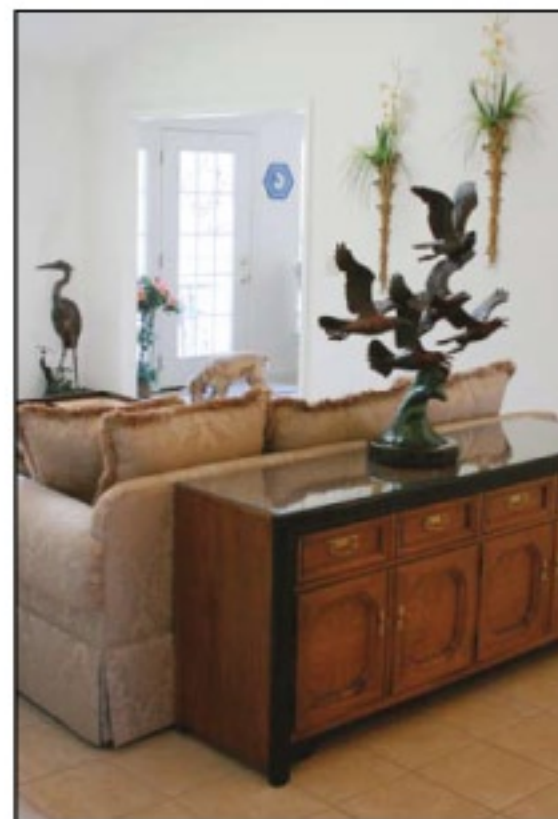
Cottage #5  
3,391 Gross Sq. Ft.  
Living Space: 1,808 Sq. Ft.  
Porch & Garage: 537 Sq. Ft.  
Basement: 1,046 Sq. Ft.

# Retirement Living **ENTRANCE FEE PLAN**

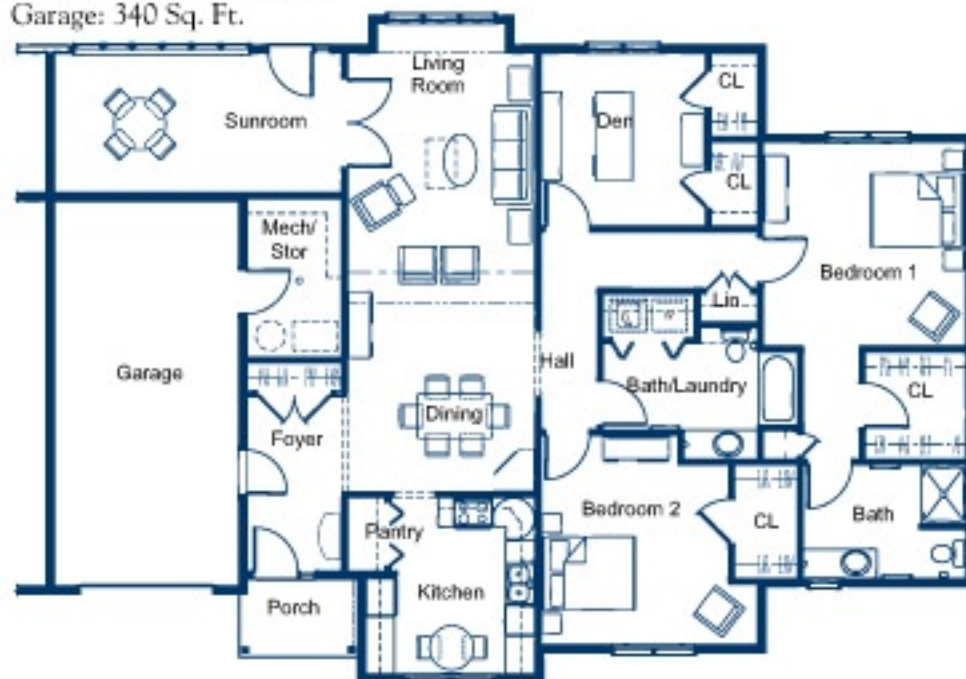
## TAFT COURT AND MONROE, FORD & MCKINLEY DRIVE COTTAGES



Cottage #6  
2,054 Gross Sq. Ft.  
Living Space: 1,714 Sq. Ft.  
Garage: 340 Sq. Ft.



Cottage #7  
2,384 Gross Sq. Ft.  
Living Space: 2,044 Sq. Ft.  
Garage: 340 Sq. Ft.



Floor plans for units 8 and 9 (basement units) are available upon request.