



Welcome



Masonic Village at
LAFAYETTE HILL

Masonic Village at **LAFAYETTE HILL**

We have so much to offer ... a beautiful place to call home with security and convenience among friendly neighbors. Enjoy this phase of your life with options – lots of them. Take this time to simplify, yet expand your horizons.

We invite you to come and explore the Masonic Village.



Founded in 1871, the Masonic Village at Lafayette Hill joined the Masonic Villages in 2004. The Masonic Villages also provides retirement living and other services to residents in Dallas, Elizabethtown, Sewickley and Warminster, Pa. All five not-for-profit communities are owned and operated by the Masonic Villages of the R.W. Grand Lodge of F. & A. M.



For more than 140 years, the Masonic Village has provided residents with a fulfilling lifestyle and peace of mind knowing quality health care services are available, if needed.

Spend your days participating in an array of social and recreational opportunities on campus including an in-house bowling alley, computer lab, Wellness Center, wood shop, putting green and so much more. The responsibility of home maintenance falls on us, so you have time to enjoy more important things.

Located on 21 scenic acres in beautiful Montgomery County, the Masonic Village is approximately 30 minutes from downtown Philadelphia. Enjoy cultural, recreational, historical and artistic attractions in the city, and return to your home in the suburbs. You may also take advantage of trips we coordinate, ranging from shopping to spending the day in Cape May, N.J. Let us worry about driving, while you relax and enjoy the ride!

While our villages are built upon and strengthened by Masonic values, our communities are committed to serving Masons and non-Masons alike.

See what the Masonic Village at Lafayette Hill has to offer you!

CONTENTS

Retirement Living.....	4-5
Questions & Answers.....	6
Application Process	6
Apartment Floor Plans	7
Personal Care.....	8
Questions & Answers.....	10
Nursing Services.....	9
Questions & Answers.....	10
Visitors Guide	11
Telephone & Email Information...	11
Directions	12



Retirement Living

Life is full of choices and opportunities, and so is Masonic Village.

Choose from a variety of one- and two-bedroom apartment floor plans, including some with balconies and patios. With so many options, you can select the right accommodation to suit your unique style. (See p. 7 for floor plans.)

Each retirement living apartment features high ceilings, large closets and a fully-equipped kitchen with a dishwasher, garbage disposal and microwave.

Cook your own meals or eat breakfast, lunch and dinner in the cozy Bistro or your evening meal in the restaurant. Enjoy delicious breakfast and lunch meals, featuring hot and cold fare. At dinner, select from a varied menu of scrumptious appetizers, soups, salads and choice of entrées.





SERVICES

included in the basic monthly service fee:

- A flexible meal plan in the restaurant and/or Bistro
- Twice monthly housekeeping
- Maintenance of furnished appliances
- Necessary maintenance and repairs in residences
- Heating/air conditioning
- Water, sewer and electric
- Property taxes
- Snow and trash removal
- Security
- Housekeeping of common areas
- Grounds maintenance
- Scheduled transportation

Nursing Services

Access outpatient and nursing services on a fee-for-service basis. Trained nursing staff offers care 24 hours a day, and a physician is on call at all times to provide quality medical services when required.

Recreational & Social Opportunities

Re-ignite old passions and explore new ones, while meeting others with similar interests. Opportunities include:

- Auditorium for live entertainment
- Billiards
- Bistro
- Bowling alley
- Clubs based on various interests
- Computer center
- Creative arts classes
- Gazebo
- Gift shop
- Library
- Model railroad club
- Putting green
- Recreation trips
- Religious and spiritual services
- Restaurant-style dining
- Shopping trips
- Shuffleboard
- Volunteer opportunities
- Wellness Center
- Wood shop

QUESTIONS & ANSWERS

Q: How much time do I have to move from my current home to Masonic Village after I select my new home?

A: You will have three to four months, and Masonic Village has various resources which may assist you in the transition.

Q: Is there someone available to assist in answering my questions surrounding my personal financial situation?

A: Yes. Our staff is available to discuss your personal financial situation with you throughout the transition process.

Q: Is there sufficient parking for more than one automobile?

A: Yes. Residents who are able to ride without assistance may also use our shuttle service which provides rides to various outings, programs and shopping trips.

Q: Will my monthly service fee or rental fee increase in the future?

A: Typically, yes. In order to maintain our high quality services, we generally increase our fees annually; however, you would receive a 60-day notice of any such change.



Q: What added financial security does Masonic Village offer to residents?

A: Masonic Village provides support to those individuals who may no longer be able to afford their services at some point in the future for reasons beyond their control. We require you to maintain your eligibility for Medicaid and other third-party reimbursements to help cover the cost of your services.

Q: As a resident, will I receive preferred access to long-term nursing services should I need them in the future?

A: Yes. All residents receive preferred access to nursing services on a fee-for-service basis if their medical condition(s) meet the appropriate guidelines.

Q: What is your pet policy?

A: Pets, up to two, are permitted. Contact us for specific guidelines based on your preferred living accommodation.

APPLICATION PROCESS

Any individual age 60 and above may submit an application for retirement living. For married couples, one spouse needs to be at least age 60 and the other needs to be at least age 55.

STEP 1: Contact the Marketing Office at (610) 828-5760 to request information, rates and/or schedule an appointment. You may also visit www.masonicvillagespa.org. For future planning, the Marketing Office accepts applications for the priority list.

PRIORITY LIST APPLICATIONS

Entrance fee priority list - A \$1,000 deposit is required to place your name on this list. We will credit this amount toward your entrance fee.

Rental plan priority list - A \$1,000 deposit is required to place your name on this list. We will credit this amount toward your first month's rent.

Your deposit reserves the unit of your choice throughout the application processing period of approximately six to eight weeks. Your deposit is refundable within this time period.

Upon notification that the apartment of your choice is available, an additional \$1,000 application deposit will be required for the entrance fee plan. No additional deposit is required for the rental plan.

STEP 2: Complete an application and submit it to the Masonic Village Marketing Office within 14 days of the date of receipt.

STEP 3: A Marketing staff member will call you regarding your application status within 14 days of the date of receipt.

If there is a question regarding your ability to comply with the requirements of tenancy, we may request further evaluation prior to approval for admission. If we determine that residency in the apartments would not best meet your needs, we will encourage you to apply to another area of the Masonic Village.

STEP 4: We will send you written verification of your approved status and a copy of the resident agreement for review within seven days of the approval date. Approximately 30 days after you receive the resident agreement, we will offer you an appointment to meet with the Marketing staff to review and sign the agreement. Or, you may mail the signed resident agreement to the Marketing Office.

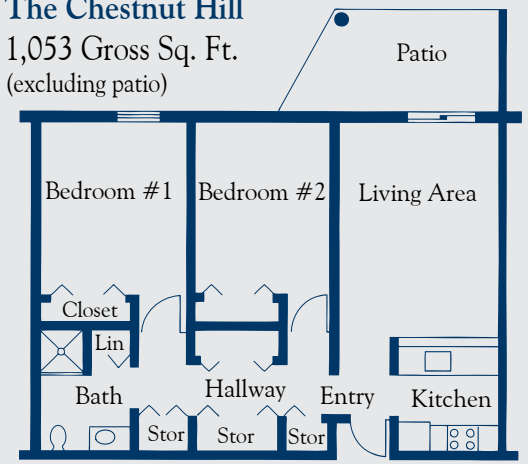
Under the **entrance fee plan**, after signing the resident agreement, you will have a maximum of 90 days, or upon occupancy, whichever is sooner, to make final payment on your entrance fee. You have 60 days, or upon occupancy, whichever is sooner, to pay your first monthly service fee. Under the **rental plan**, your first month's rent is due upon return of the resident agreement.

For additional information, please contact our Marketing Office at (610) 828-5760 or MVLHmarketing@masonicvillagespa.org.



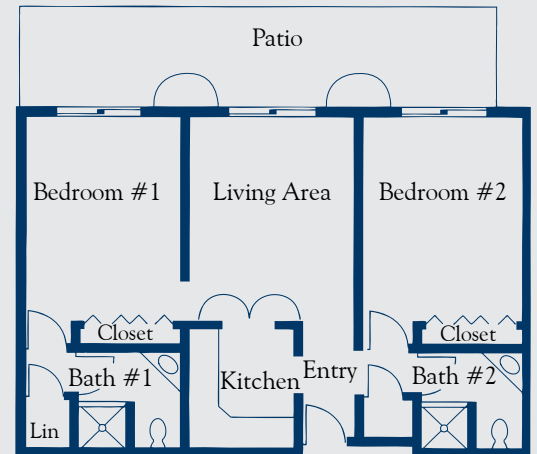
The Chestnut Hill

1,053 Gross Sq. Ft.
(excluding patio)



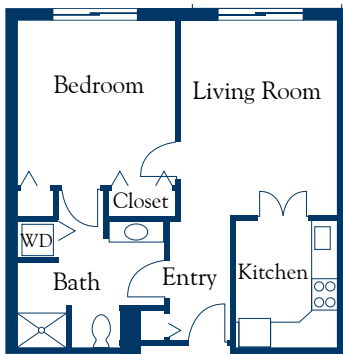
The Plymouth Meeting

1,053 Gross Sq. Ft. (excluding patio)

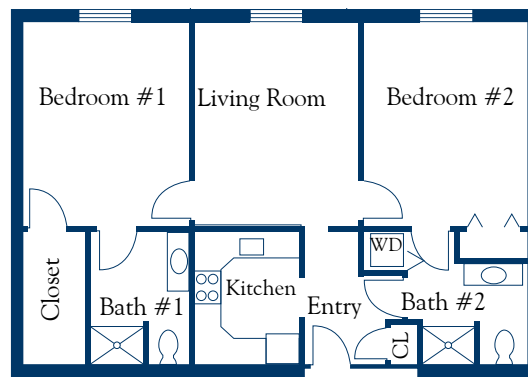


The Lafayette

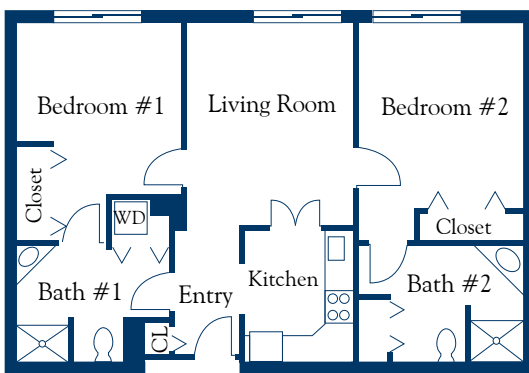
689 Gross Sq. Ft.
(excluding patio/balcony)



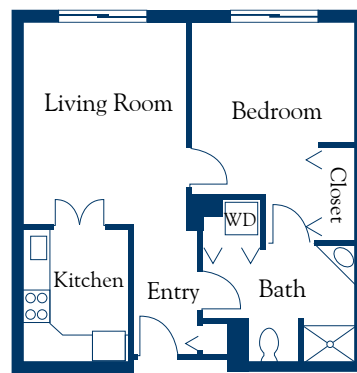
One-Bedroom Deluxe (A1)
731 Gross Sq. Ft.



Two-Bedroom Deluxe (A2)
1,107 Gross Sq. Ft.



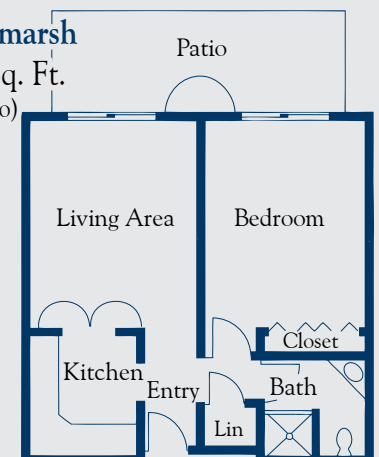
Unit 2A Sample Apartment
1,107 Gross Sq. Ft.



Unit 1B Sample Apartment
738 Gross Sq. Ft.

The Whitmarsh

702 Gross Sq. Ft.
(excluding patio)



Personal Care

If you require some help in your daily life, reach your fullest potential in our personal care area.

Caring staff help to evaluate each resident to determine his or her needs, so you will receive individualized assistance. Enjoy delicious meals with friends in the dining room, and explore your hobbies and interests with daily activities, trips and entertainment.

Spacious suites are available in single and double occupancy, each with a private bath and closet. You can personalize your home with furniture, photographs and other items to make it your own.



SERVICES

included in the basic monthly service fee:

- Three meals daily in the dining room
- Weekly housekeeping services
- Weekly linen service (sheets and towels)
- All utilities (except cable and telephone)
- Leisure programs and social events
- Assistance with personal hygiene, bathing, dressing, activities of daily living and taking medications
- Services available 24 hours a day

Nursing Services

Access outpatient and nursing services on a fee-for-service basis. Our trained nursing staff offer care 24 hours a day, and a physician is on call at all times to provide quality medical services when required (see next page).



SERVICES

included in the suite rates:

- 24-hour nursing services
- Dietary services, including special diets
- All utilities (except cable and telephone)
- Housekeeping and linen services
- Recreational opportunities and therapeutic services
- Social services/discharge planning

Ancillary Services

Achieve your optimal level of wellness with the assistance of on-site licensed physical, occupational and speech therapists.

Nursing Services

Enjoy life to the fullest with the comfort and assistance you need through our nursing services. Relax in your beautifully furnished suite within a friendly, warm neighborhood. Together with friends, dine on meals planned with the supervision of a registered dietitian.

Receive ongoing support from our social services department and therapeutic recreation specialists, as well as housekeeping, laundry and maintenance personnel.

A staff of registered and licensed nurses and certified nursing assistants provide 24-hour care, with attending physician oversight. The Masonic Village is a Medicare/Medicaid-certified community.



Explore your hobbies and interests through recreational opportunities and therapeutic activities, including:

- Creative arts
- Current events
- Entertainment
- Exercise therapy
- Games/cards
- Intergenerational programs
- Movies
- Musical programs
- Nintendo Wii
- Parties and holiday festivities
- Pet therapy
- Recreational trips
- Religious and spiritual services
- Wellness Center



Eden Alternative®

Experience a higher quality of life through the Eden Alternative®. This philosophy promotes active and caring environments which encourage self-worth, camaraderie and excitement for residents and employees.

As a certified Eden Alternative® site, we use pets to bring variety, spontaneity and companionship into your daily life. Children and volunteers visit regularly, giving you the opportunity to build meaningful relationships. Even our architecture, landscape, activities, meals and staff training revolve around these principles.

See the difference the Eden Alternative® has made at Masonic Village!

QUESTIONS & ANSWERS

Q: Must I have a minimum amount of assets to be eligible to move to the Masonic Village? If my funds deplete, will I be asked to leave?

A: No. There is no required amount of money necessary to enter the personal care and nursing services areas. Generous donations enable the Masonic Villages to provide services to eligible individuals, Masons and non-Masons alike, as part of our Mission of Love. We require you to maintain your eligibility for Medical Assistance, Medicaid and other third-party payers to cover the cost for your services. Our staff will help you apply for all available funds.

Q: If my assets have depleted, will I receive money on a monthly basis?

A: In the personal care and nursing service areas, you will receive a monthly stipend to take care of incidental expenses, such as stamps, telephone bill, etc. The finance department provides a personal account for you to deposit your funds.

Q: Does Masonic Village require a durable power of attorney and a living will for admission?

A: No; however, we encourage all residents to have a general, durable power of attorney and a living will. It is important to appoint someone to make medical and financial decisions should you become unable to do so.

For additional questions or to request a rate sheet, contact the Admissions Office at (610) 825-6100, ext. 1214 for personal care or ext. 1271 for nursing services.

VISITORS GUIDE

Ideally situated in a peaceful, suburban setting, the Masonic Village at Lafayette Hill is conveniently located close to the historic Chestnut Hill section of Philadelphia. We are moments away from renowned shopping, arts, cultural and athletic venues.

Nearby attractions include Morris Arboretum, Woodmere Art Museum, Plymouth Meeting Mall, Metroplex Shopping Center and Chestnut Hill Shopping District.



Telephone & Email Information

Admissions Office

(610) 825-6100

Dial ext. 1214 for personal care and
ext. 1271 for nursing services.

MVLHmarketing@masonicvillagespa.org

Marketing Office - Retirement Living

(610) 828-5760

MVLHmarketing@masonicvillagespa.org

Executive Director's Office

(610) 825-6100, ext. 1200

Office of Gift Planning

(610) 825-6100, ext. 1348,
or toll-free (800) 599-6454

giving@masonicvillagespa.org

Volunteer Services

(610) 825-6100, ext. 1275

MVLHvolunteers@masonicvillagespa.org

Local Dining

Cracker Barrel Old Country Store

2095 Gallagher Road
Plymouth Meeting, PA
19462

(610) 828-2221

Brittingham's Irish Pub & Seafood

640 East Germantown Pike
Lafayette Hill, PA 19444
(610) 828-7351

Friendly's Restaurant

9165 Ridge Avenue
Philadelphia, PA 19128
(215) 487-2233

J.B. Dawson's Restaurant & Bar

440 Plymouth Road
Plymouth Meeting, PA
19462

(610) 260-0550

Ruby Tuesday

2053 Chemical Road
Plymouth Meeting, PA
19462

(610) 260-4466

Nearby Lodging

ACE Conference Center

800 Ridge Pike
Lafayette Hill, PA 19444
(800) 523-3000

Hampton Inn

2055 Chemical Road
Plymouth Meeting, PA
19462

(610) 567-0900

Philadelphia Marriott West

111 Crawford Ave.
West Conshohocken, PA
19428

(888) 236-2427

*Visit us at www.masonicvillagespa.org for detailed information about all
Masonic Village's amenities and services.*

DIRECTIONS TO MASONIC VILLAGE

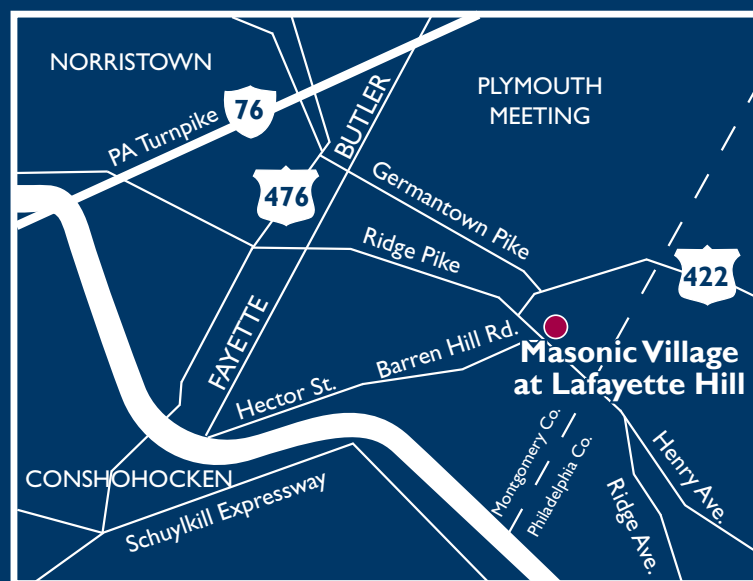


From Center City South or West Philadelphia: Take the Schuylkill Expressway (I-76) West to Exit I-476 North-Plymouth Meeting (Blue Route). Take Exit 18A Conshohocken. You will then be on Ridge Pike. Stay on Ridge Pike for approximately 3½ miles. The Masonic Village entrance will be on the left at the top of the hill.

From the North (New York, New Jersey): Take the New Jersey Turnpike South. Take Exit 6 to the Pennsylvania Turnpike. Take the turnpike to Exit 333, Norristown. After tolls, take Germantown Pike East. At the third traffic light, turn right onto Joshua Road. At the next traffic light, turn left onto Ridge Pike. Stay on this road for approximately two miles. The Masonic Village entrance will be on the left at the top of the hill.

From Western Pennsylvania: Take the Pennsylvania Turnpike East to Exit 333, Norristown. After tolls, take Germantown Pike East. At the third traffic light, turn right onto Joshua Road. At the next traffic light, turn left onto Ridge Pike. Stay on this road for approximately two miles. The Masonic Village entrance will be on the left at the top of the hill.

From the West (King of Prussia, Pa., Chester County, Pa.): Take Route 202 North to the Schuylkill Expressway (I-76) East. Take Exit I-476 North-Plymouth Meeting (Blue Route). Take Exit 18A Conshohocken. You then will be on Ridge Pike. Stay on Ridge Pike for approximately 3½ miles. The Masonic Village entrance will be on the left at the top of the hill.



From the South (Washington, D.C., Delaware County, Pa.): Take Route I-95 North to I-476 North-Plymouth Meeting (Blue Route). Take Exit 18A Conshohocken. You then will be on Ridge Pike. Stay on Ridge Pike for approximately 3½ miles. The Masonic Village entrance will be on the left at the top of the hill.

The Masonic Village is a smoke-free community.

801 Ridge Pike, Lafayette Hill, PA 19444
(610) 825-6100
www.masonicvillagespa.org